

FOLLETERRE Faerie News

6th year of Folleterre January 2011



picture by Junis, Artist Bernalotte

For me Folleterre is a sacred space where gay men can meet and deeply connect with each other and mother nature, a magic island apart from the outer world but not denying its existence.

A place where we meet in heart space.

A place where we welcome queer beings of all gender, celebrate our diversity and share our love for and with each other.

A place where everyone can come regardless whether she or he can pay anything.

It's a place where we can come and be how we are and be accepted as such. It's about finding out who we are and what we are here for.

A place to rejoice, play and go back home with fresh energy and healing powers to be spread into the world.

A place to grow emotionally and spiritually. It's important to meet with respect for each other, important to sloooooooow down, so we can truly see each other, talk to each other and listen to each other.

INTRO by: Eilendes Wasser



April 16th till May 1st 2011

Community week,

During these weeks, we focus on renovation of the floor above the bathroom we gone make.

Demolition of the old floor beams and rotten planks, putting new beams and floor planks in, installation of a new chimney for the Bathroom and start to make a sewage for the Bathroom; shower, sink and toilet.

All this is not very complicated and you don't need to be very skilled to help with this, although it would be helpful if you can mention your skills.

You are most welcome to attend this week(s) to make community, play, Joy, Rituals, Heart circles and enjoy nature of course, If you only like to cook or do other domestic stuff or good in giving massages please come, we need you to support others.

We are not a labor camp, but we like to do something, there is not a date line to do things, having a faerie time by creation.

Please send your details; name, address, arrival/departure, needs and what time you need to pick up at Lure to this email address.

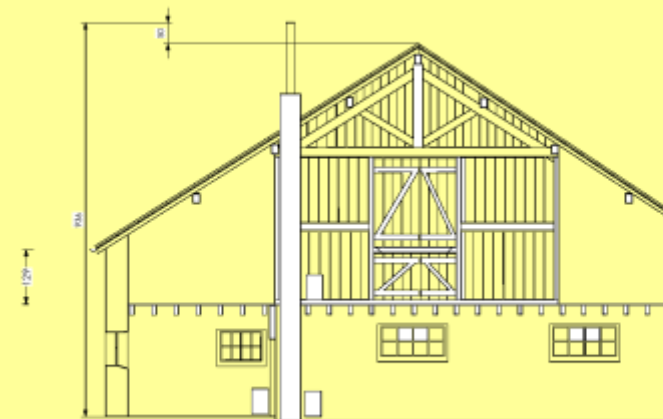
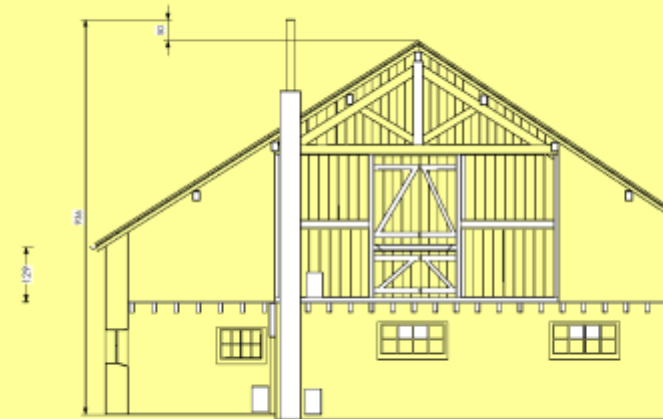
Communityweekapril2011@folleterre.org

MONEY MATTERS

To help cover costs we do ask for between €10 and €20 per day depending on ability to pay. This covers all food and the basics. Nobody will send away of lack of funds. For pickups from Railway station the driver can ask you for a donation (€ 10,-)

Faerie nizer: Wolf

Faerie helper: TumbleWeed



WORKING TOGETHER

So many faeries (besides me) have remarked on the satisfaction they felt from participating in what we now call "Community Weeks" that I feel moved to write a little about these. In the context of the gathering year just past and my own experience, the pre-Summer Gathering preparation week comes to mind along with the annual Lumber gathering (originally advertised with the title of the Dutch for wood-chop- but most non-Dutch faeries had trouble getting their tongues around this.. unlike most other things:-)

Of course there are huge "highs" often to be found at other gatherings- but often "lows" to go along with these- the crash and burn syndrome. Community weeks are not all about work. During "Lumbers", despite all the hard physical activity during the day, we found energy to do a variety of social, all-group activities also- heart circles, massages, tarot card readings, sing-a-longs, visiting EW and Hironde's farm, a campfire. Somehow, together, we managed to achieve every single thing we talked about and listed! Getting ready for the biggest gathering in our 5 year history in July, we cleaned house, cleared the land, prepared for a possible water shortage and many other tasks.. yet never neglected to swim in the neighbour lakes, take hikes and bike rides, cook and eat very well, be fabulous and have fun.

The group sizes were small enough (c. 12-20) for everyone to get to know all in the group and therefore feel safe and included. Doing work that benefits all in the community (including those yet to come) helped make us all feel of value. Think about it: someone cooking food indoors for the maybe physically stronger wood-cutters can take just as much pride in those 5 beautiful new woodstacks as any other. It was absolutely clear that those coming to Folleterre for the first time who did the Community Week before Summer Gathering found their place in the community, gaining in acceptance and self-confidence by the time the main gathering started.

On the very last night of Lumbers around midnight, most of us were still awake and around the campfire and, completely tired though we all were, found the energy to spend an hour walking around all the work we had made together on the land- and witnessing and celebrating the achievement of others that some of us had not had the opportunity to see before. A joyous and magic moment of sharing and gentle pride.

Whenever possible we deliberately strived to share skills- not leave things to one or two "experts"- but when this happened, requested those specially-trained or more experienced to explain, demonstrate, and pass on knowledge.. We invited newcomers and visitors to take centre stage in beautifying rituals or facilitating heart circles. When someone in a key role was sick, late arriving or absent at a crucial time, others stepped-in seamlessly. Faeries stepped up to take responsibility- so easily, gracefully and generously with the support of a harmonious group. So if you have not yet thought about attending a Community Week before, give one a try this year. There is the highest chance you will feel abundantly rewarded. I have not mentioned one faerie name here- because you are all stars and you shine very bright in Folleterre's faerie firmament,

Thank you, love Yan.



Invitation to the **GREAT CIRCLE**

The General Assembly of the Association.
Meet the legal requirements for the
association.

This year before the summergathering

Invitation to the Great Circle
30th - 31st July 2011

This invitation is addressed to members of the Association les Amis de Folleterre.

Each year our association holds a general assembly of members, this is the supreme decision making body of the association, and it is known as the *Great Circle*. At this *Great Circle* members of the Administrative Counsel and Stewards Circle are elected.; changes to internal rules and statutes are up for approval and the financial report of the treasurer is scrutinised. It is the time also to debate issues and set policies. Our statutes specify that the *Great Circle* must be integrated into a gathering of the faeries or direct before or after a gathering this year circle will take place before the summer gathering, dates of the summergathering 1st aug. - 11 aug.

Association les Amis de Folleterre France

secretary@folleterre.org

Vision Circle 10th - 12th December 2010

Uedem, Germany

This year Vision Circle weekend, organized by Pikachu and Fauny at a lovely farmhouse of friends of friends, we gather together with 12 faeries, Pikachu, Faun, Yan, Wolf, EW, Lappi, Community Babes, Tumbleweed, Yuval, Anwar, Junis and Deetale.

After a ritual, Sauna and Bonfire we discussed a lot of issues, not all the issues we had time enough for.

We divided up into small groups to discuss each agenda item and all points raised by Faeries posted to the e list. These small groups summarised and brain stormed and then reported on the individual sections to the larger group.

Its almost impossible to describe all the items in here, the agenda I will mention.

A vision Circle is a meeting where we gather together, physical and it is a never-ending process, the intention is to do this also during gatherings.

1. Sanctuary Folleterre - Organisation and structure

2. Finance

3. Resources - what do we have

4. House maintenance

5. Do we have the resources for a bigger vision?

6. Health and Safety

For those interested I can supply the minutes of the vision circle, although they are not complete.

Wolf

CONTACT LIST OF GATHERING and ORGANIZERS for 2011

DATES	GATHERING	ORGANIZER	EMAIL
....march -april	Pond Digging	Harry	ponddigging@folleterre.org
16 april - 1 May	Community Week	Wolf	communityweekapril2011@folleterre.org
9 - 13 May	Garden week	Junis	gardenweek@folleterre.org
13 - 20 May	Beltane	Yan, Pikachu, Jeroen	beltane2011@folleterre.org
1 - 5 June	Rheingold	Heidi	rheingold2011@folleterre.org
17 - 25 June	Solstice		Solstice2011@folleterre.org
.... - June	Community week		communityweekjune2011@folleterre.org
2 - 8 July	Elder	Fauny	elders@folleterre.org
11 - 22 July	Terschelling	LoveHeandel	see http://www.fairie-island.nl for details
22 - 29 July	Community Week	Yan	communityweekjuly2011@folleterre.org
30 - 31 July	Great Circle	Yan/Wolf	greatcircle@folleterre.org
1 - 11 august	Summer Gathering	Shokti/Kitty/Faegus	Summergathering@folleterre.org
15 - 21 august	Quit Gathering	EW/Sunlover/Yuval	quitgathering@folleterre.org
22 -28 august	Art & Crafts gathering	Burnalotte/bluediary	arts@folleterre.org
21 sept.	Equinox		
14 - 22 october	Lumbers week	Junis/Fauny	

Lumber jack & Jane's 2010 - a report from Junis



going with the flow

looking back on a very inspirational and productive lumberweek, one word seems to force itself to the foreground; "flow". Several individuals expressed their arrival in this state of surrender in their lives. Energy which is otherwise lost by too much concern, goal focusing and stress can be replaced by a different state of mind, and thus freeing more energy which is so often wasted by getting tricked into too many mind and ego games.

There was also a more general and gentle flow of working and communicating together amongst all participants. A forward energy which lifted us a bit and fueled us through the days, under changing weather circumstances. Fog, rain, clear blue skies, bright sun and night frosts. Apart from some "die hards" who slept under windy rooftiles, most of us found warmth and comfort in the heated parts of the house. The new insulated floor of the friendship room has turned this space into a comfortable and dry place to be. The Norwegian woodburning stove simmered on for 10 days in a row, without pausing.

With new arrival Fagus from Devon who taught everybody who wanted to know about chainsaw skill's and energetic Akka from Emmental Switzerland the working pace was set. A new corridor and clearings in the pine mono plantation were made, so light can come in to create conditions for more variety and fresh groundcovers to come up next spring.

The little wildflower patch on the left side from the tower of poop has been cleared from long grass and excess growth, with the intention to expand into a larger upmountain field next year, possibly planted with fruit trees in a later stage.

Grass and bush mowing of the entire entree road, around the house and the entire Faerie Prairy were completed by EW and Tumble Weed. Fruit trees pruned, nest boxes cleaned (all of them have been inhabited this year) Several wood stacks were set up. As well in the pine growth as near the tower and behind the fire pit. Bernalotte created a new butterfly on the sliding door in striking colors, the EF symbol which stands for change and metamorphose.

The water drainage canal along the entree road was opened and cleaned again to keep the road in a better and dry condition.

With Giuseppe from California, Alexis from Venezuela, Tricky from Belgium, the boys from UK , Germany and Holland, we were with 7 different nationalities, brought together under one multicolored rainbow flag. Kwai a long term faerie from the US stayed a couple of days during his travels through Europe and cooked a great dinner. He wrote an article in RFD in '97 about the EF on Terschelling. With his photo's and interviews he can possibly promote Folleterre and the EuroFaeries a bit more through different faerie channels in the States.

Apart from various projects there was also time to actually swim in the lake, at this time of the year(!) Intimate heart circles, and a trip through the thousand lake area to visit EW and Famous at their farm in LaMontagne, we enjoyed their land and animals and good cooking. The week was closed by a last ritual and singing around a big bonfire slowly losing heat to turn into a red glowing patch under starry sky.

Once again the magic of undertaking a communal project, inspired by each other's commitment to do a good job, was experienced by all participants. Thank you all, Yan, Alexis, Fagus, Mark the lark, Giuseppe, Tumbleweed, Bernalotte, Akka, Tricky, Kwai, EW, Famous and Metta B for contributing and making our sanctuary a more beautiful place to be.

much love to all,
Junis



Faerie Sanctuary-

A Poem from Timkebell

**This place is my heaven
This place is my dream!**



A gathering place for kindred spirits from high and low, from near and far.
A place where stimulating, interesting, fascinating, challenging relationships are safely cultivated
The fruits to be harvested as a gift to the planet!

A place to relax and relate to each others deity within
To affirm each others inner beautiful uniqueness.

A place of joyful festivity and carnival!

An escape from the divisions created by inequalities of power and wealth.

Away from orientation and identity constrictions.

A place where children are welcomed to experience a world of trust between queer adult and child

A Wild Faerie world where the adult inner child is free and full of play.

A chance to consolidate a sense of who we are and our purpose in life.

A place to experience deep family ties

Blood is thicker than water but Spirit is thicker than both!

A place instilling strength and bravery to become who we truly are from moment to moment.

A place where the exquisite sacredness of touch is experienced and explored without fear of censure.

**This place is my heaven
This place is my dream!**



Where the specialness we feel which is central to our lives is a quite normal.
Where our stimulating, challenging energy is revolutionary, evolutionary and perfectly natural.
Where our magic is an exciting expression of our uniqueness.
Where we are privileged adventurers having fun by simply us being us!
Feeling fresh and clean in an oasis of Faerie Wisdom
Balancing the needs of our minds, bodies and souls.
Healing ourselves!
Our emotional sacredness a sacrament to heal the world.

**This place is my heaven
This place is my dream!**



Where we will stop feeling awkward about being noticed as different
Where we will feel empowered to push boundaries in ourselves and each other.
Where we will foster and nurture self discovery
Where we will challenge conventional restrictions.

This is a place where there is a frisson of danger
This is a womb of safety

A place for valuing and validating
A Balanced Natural Wise Accepting Space where Fabulousness oozes out of us effortlessly
A place for Health and Happiness and Joyfulness!
A place to explore the wondrous miracles of our sexualities and identities.
A space to tune into the understandings and ethics of our ancestors.
A space to cultivate inner peace and equanimity.
A temple where Queer Spirit will thrive
Where self understanding
Where seeking, acknowledging, and owning the light and the shade in ourselves
Is about moving away from the mirage of a unity created by consensus divisiveness.

Each of us produces a silken thread of uniqueness
In this place we find the silken thread in our own lives
And together we weave a tapestry.

This is the story of our past
The story of our present
The story of our future.

**This place is my heaven
This place is my dream**

Hail and Welcome!

The Spirit of The Faerie



Les Amis de Folleterre, management accounts

Year 5, 1 September 2009 to 30 June 2010 (10 months)

Assets

Current property value (estimate) €	150,000	
Mortgage left to pay (until June 2020)	-72,410	
Cash in bank (inc PayPal)	12,710	
Total assets (estimate)	90,300	

Movement in funds

		Total
Income		
Membership fees	7,387	
Donations	2,103	
Interest on savings	208	9,698
Expenditure		
Mortgage	-7,947	
Utilities (France Telecom)	-348	
Property development	-540	
Bank charges / taxes	-57	
Subscription FFBA	-	
Administration (mail-outs, advertising)	-59	-8,951
Surplus		747



This account is for ten months of the financial year, which started on 1 September 2009. This includes €1,745 income from the Beltane gathering but does not include income from summer gathering 2010.

Last year we overspent by €5,000, so a decision was made at the beginning of this financial year to spend as little as possible on house developments, which we have kept to. The on-going membership payments were supplemented by two donations from Stichting Eurofaeries totalling €2,103, which leaves us approximately €750 better off than we were at the beginning of the year.

The table below predicts our position at the end of the financial year (30 August), assuming the usual income from summer gathering:

Surplus so far	747
Summer gathering income	4,000
Regular monthly donations @ €330/mth	660
Regular outgoings (2 months)	-1,800
Property development	0
Predicted surplus during financial year 2009-10	3,607

The situation has improved slightly on last year:

Funds at start of year (1 Sep 09)	11,963
Predicted surplus 2009/10	3,607
Predicted funds at 30 August 2010	15,570



At the moment, we have 14 regular donors who contribute monthly payments either through PayPal or directly to the bank account, totaling €330. This is almost the same as this time last year (13); we have gained some and lost some. However, it costs us around €900 each month to service the mortgage, utilities and other items. We rely on the gatherings to bring in the rest of the income that we need each year.

As we have noted in previous years, this is problematic in the long term. The house needs on-going repair at the very least, and ideally we would like to develop the house and land. If we continue to spend nothing on the house, then it will decline. In 10 months, we've spent almost €9,000 just on essentials, but only brought in €5,640 from the regular membership payments (excluding the Beltane income). Luckily, the additional €2,100 from the Eurofaeries account has made the situation look a bit better this year.

Ideally, we should be able to cover the monthly expenditures through regular donations, and then the money we raise at gatherings can be used to make structural developments to the house and land. So as treasurer I would recommend that we continue the great work done so far on fundraising from the membership, and get more money coming in each month. Also, the Great Circle should set a budget for 2010/11 based on the above information.

On a personal note, it has been a great honour to serve our amazing community by acting as treasurer for the last three years, and I look forward to supporting the next treasurer in taking over the responsibilities.

Lev Pedro, Treasurer, 'Les Amis de Folleterre'
20 July 2010

Treasurer's Report January 2011

(for Folleterre Winter Newsletter)

After the financial alarm bells of 2009, I am pleased to say our bank balance is better than the previous high point, 3 years ago (then €16,000 euros).

Since that time we have had to dip into our prudent reserve of €10,000 euros.

Great Circle 2010 approved the continuation of maintaining this reserve, but I estimate we should be able to spend upwards of 6,000 euros this year for projects on the house and land -after last year's time of reining-in expenditure, following the big outgoing of the septic tank installation.

Last year Beltane made nearly €1,750 and Summer Gathering over € 7,000 euros which was a great relief and an immense credit to all who worked so hard and lovingly to make these gatherings happen. Other gatherings also contributed, including Community Weeks.

On the membership front there was a stalled response to the rise to a 60 euro (suggested) annual membership passed Summer 2009, but since Summer 2010 it looks like paying dividends.

The biggest change seems to be in happy faeries starting to pay their membership dues after successful gatherings- and that we are organised enough to follow up these offers to make regular financial commitment. As we nudge towards a regular monthly income of € 500 from members paying via bank or PayPal, we still have a long way to go- and would love to see members who had stopped paying now returning.

Gone are the days when it was just around a dozen faeries contributing, with now c. 40 members!

We cannot rely on hitting the same financial highs in 2011, but I predict Gathering income at upwards of € 7,000 this year. Last year we prospered also because of large inward flows from eurofaerie funds unlikely to be repeated on this scale. There is still plenty of room for sponsorship of specific projects- and for many thinking of membership to make that commitment that is, after all, just € 5 euro a month.

Looking forward to a year of making our Sanctuary a healthier and safer and more comfortable place to stay- and judiciously advancing our partnership with the land- and a last word of thanks to all those who have given money, things, time, love to help keep making it all happen.

Yan

Folleterre needs €€€€€€€€



➔ THE FACTS

It costs €900 each month to pay the mortgage and the utilities, before we develop the property.

We need everyone who has an interest in Folleterre's future to give something ... whether you can afford €5 per month or €100, your donation is very important.

➔ SO WHAT CAN I DO?

- 😊 When you come to Folleterre ... please give a donation
- 😊 Set up a monthly subscription

➔ HOW DO I PAY?

There are two ways to pay:

(1) Set up a regular donation from your bank to the Folleterre account

Transfers within France:
Banque 10278
Guichet 07861
N° compte 00020076201
Clé 60

International Transfers:
IBAN FR76 1027 8078 6100 0200 7620 160
BIC (SWIFT) CMCIFR2A

Bank Information
Credit Mutuel, CCM Semouse et Combeaute, 4 rue Henri Lebrun, 70800 St Loup sur Semouse

Recipient Information
Les Amis de Folleterre, Les Groulots, 70270 Ternuay, France

(2) Via PayPal

Simply go to www.folleterre.org, click on 'GIVE' and follow links to PayPal. You can set up a monthly payment to be deducted from your credit card.

Thank you! 😊